

KEY: CLOSE-UP (CU), MIDDLE-SHOT (MS), FULL-SHOT (FS), LONG-SHOT (LS), ESTABLISHING SHOT (EST)

161.



ACTION: WOMAN #1 (SARAH) picks up a swaddled bundle from within the ditch that she has dug. She stands up and holds it up to the light.

NEONATOLOGIST #2 (off-camera): *Try to speak very quietly. Any kind of stimulus can cause preemies to burn precious calories. [Pause]. We're going to try to graduate her from the respirator to the c-pap this morning. We also might have to do a spinal tap later today.*

SFX: SFX of helicopter has reached maximum volume.

163.

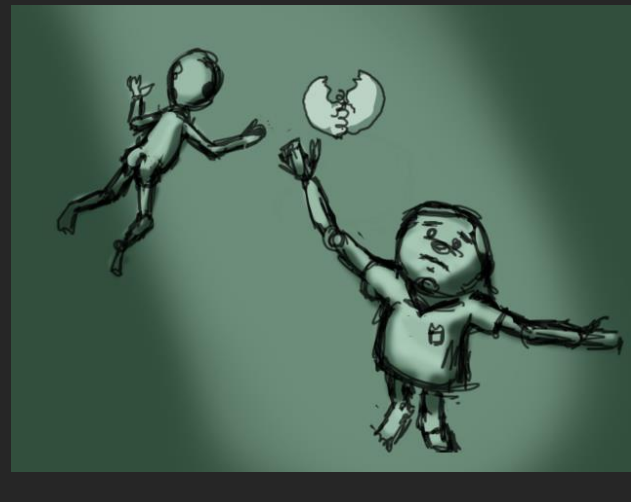


ACTION: SAME SHOT. SARAH lets go of the baby, as though she is releasing something into space. The blanket gently falls away. All of the tubes fall away. The baby is slowly drifting up but looking back down at Sarah.

NEONATOLOGIST #3 (OFF-SCREEN): *We will also need to do a brain scan to check for hemorrhages, which could lead to cerebral palsy or mental retardation.*

TOTAL TIME:

164.

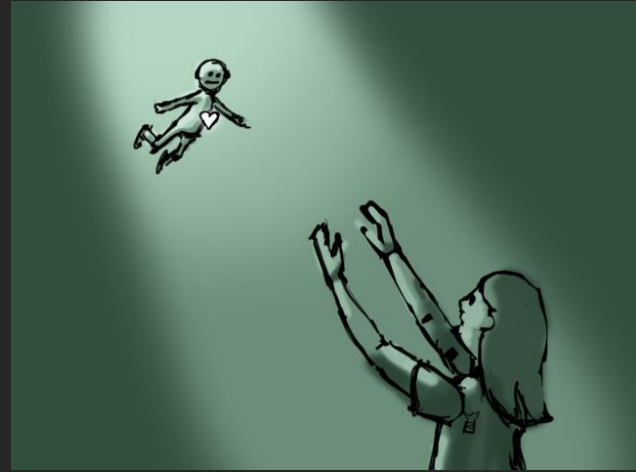


ACTION: CUT TO AERIAL SHOT OF SARAH. She is smiling with tears running down each cheek. Both arms are outstretched into the sky. SARAH rips out what is left of her broken, light-bulb heart and gently releases it upward.

TOTAL TIME:

KEY: CLOSE-UP (CU), MIDDLE-SHOT (MS), FULL-SHOT (FS), LONG-SHOT (LS), ESTABLISHING SHOT (EST)

165.



ACTION: CUT TO SIDEVIEW SARAH and BABY LILA floating in the air. The heart floats upward and enters the babies' chest where it becomes whole again. The heart begins beating strongly and regularly.

TOTAL TIME:

166.



ACTION: SAME SHOT. BABY LILA drifts back down into SARAH'S arms.

TOTAL TIME:

167.



ACTION: CUT TO MS. Her heart overlaps where SARAH'S previously was. LILA and SARAH now have the same heart. FADE TO WHITE.

TOTAL TIME:

KEY: CLOSE-UP (CU), MIDDLE-SHOT (MS), FULL-SHOT (FS), LONG-SHOT (LS), ESTABLISHING SHOT (EST)

168.



ACTION: CUT TO SARAH'S silhouette from behind. She is standing in front of a large French door, overlooking a backyard. Snow is falling. Everything is blanketed in a layer of white. The tv/news is on in the background.

NEWS ANCHOR : *Friday, October 13th will forever go down in history as the earliest recorded snowfall in Buffalo history... power is out all over the region and the entire city is in a state of emergency. The mayor has asked for no unnecessary travel.*

TOTAL TIME:

169.



ACTION: CUT TO FS BACKYARD, IN FRONT OF PARK BENCH/BACK FENCE AREA. This is where SARAH was previously digging. It is silent except for the snowfall.

TOTAL TIME:

170.



ACTION: CUT TO FRONTAL SHOT of black Jeep Cherokee, through the windshield. It is the same camera angle as the beginning of the film when SARAH and GAR were on their way to the hospital for the initial sonogram. This time there are 6 inches of snow on top of the roof, covering the windshield.

TOTAL TIME:

KEY: CLOSE-UP (CU), MIDDLE-SHOT (MS), FULL-SHOT (FS), LONG-SHOT (LS), ESTABLISHING SHOT (EST)

171.



ACTION: SAME SHOT. Both front doors of the jeep open. We see a quick flash of two people getting into the Jeep from the sides of the screen. They close the doors and some of the snow falls off the roof.

TOTAL TIME:

172.



ACTION: SAME SHOT. The engine turns on. The lights turn on. The windshield wipers turn on, clearing a view of the passengers. SARAH is in the passenger seat and GAR is in the driver's seat. They are both heavily bundled in winter clothes. They are both smiling large. Phish music is playing on the radio.

TOTAL TIME:

173.



ACTION: LS SARAH AND GAR pull into the hospital gate, past the "Sister's Hospital" sign. The lot is virtually empty. They drive past gigantic heaps of snow and park.

TOTAL TIME:

KEY: CLOSE-UP (CU), MIDDLE-SHOT (MS), FULL-SHOT (FS), LONG-SHOT (LS), ESTABLISHING SHOT (EST)

174.



ACTION: FS SARAH AND GAR standing out in the snow.

TOTAL TIME:

175.



ACTION: CU GAR. Gar smiles.

GAR: *Ready?*

TOTAL TIME:

176.

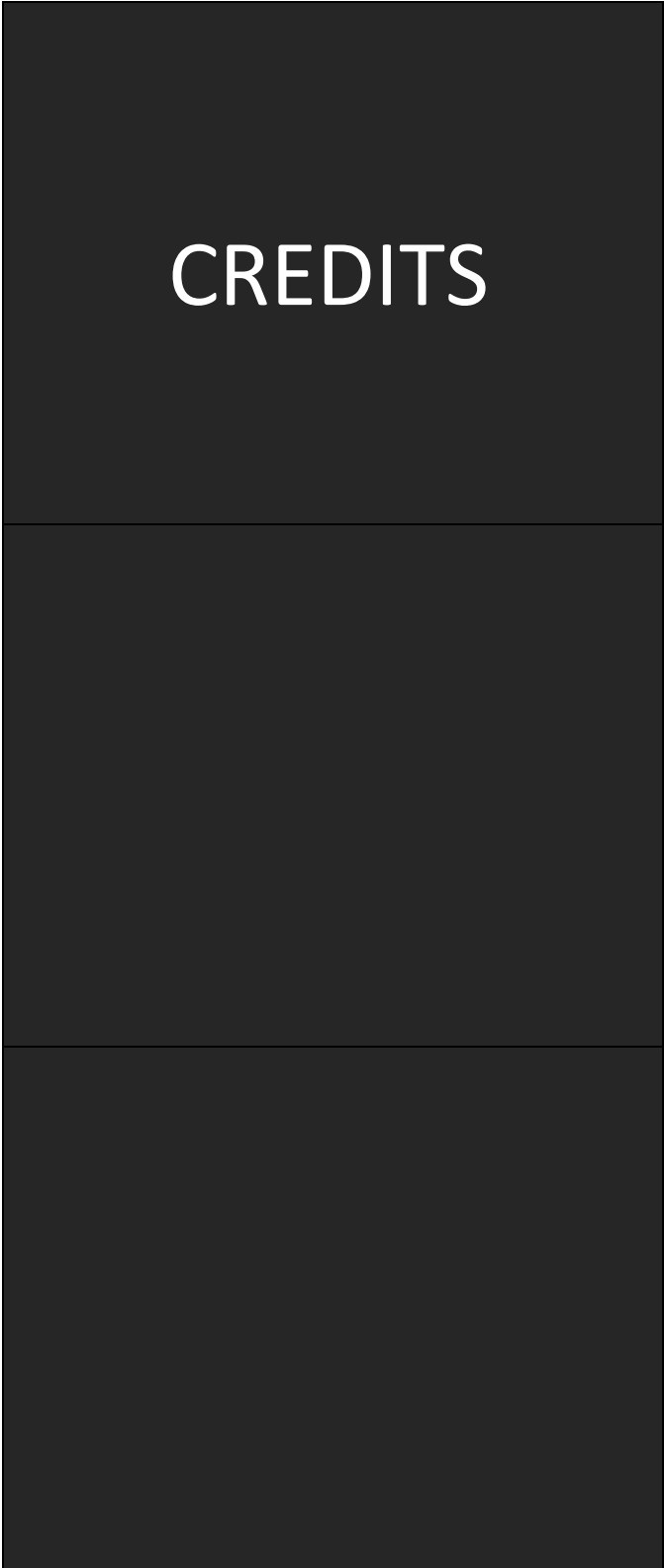


ACTION: CUT TO CU SARAH. Sarah smiles.

SARAH: *Let's go get her.*

TOTAL TIME:

KEY: CLOSE-UP (CU), MIDDLE-SHOT (MS), FULL-SHOT (FS), LONG-SHOT (LS), ESTABLISHING SHOT (EST)



<p>ACTION: CUT TO CREDITS.</p> <p>TOTAL TIME:</p>